

The Basic Characteristics

Prašice village is situated in Bánovská valley, at the boundary of Považský Inovec and Nitrianska pahorkatina.

There is a Železnica river flowing through Prašice, at which a water reservoir Duchonka was built. At the north - east direction a Chotina creek flows, into which at the south part of village Železnica pours. From the administrative point of view Prašice belongs to Topoľčany district and Nitra region.

Population: (31.12.2010): 2100

Area: 28,25 km²

First written mention: 1245



Prašice municipality

Contact information

Obecný úrad Prašice
1. Mája 142/142
956 22 Prašice

Tel./Fax: 038/539 14 21

E – mail: obec.prasice@stonline.sk

Web: www.prasice.sk

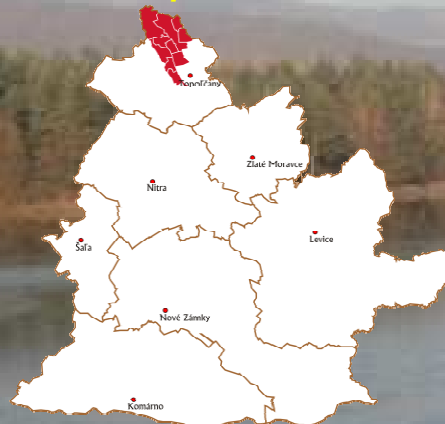
Village manager: Erika Nemešová

The hand made product from Prašice



Source: www.prasice.sk

The map of SOTDUM mikroregion



Source: www.sazp.sk

The traditional Prašice folk costume



Source: www.prasice.sk

Village symbols

The Shield



At the red background are spikes next share and vomer. It is considered to be the symbols of peace and good harvest which only peace can firm up.

Source: <http://www.prasice..sk>

The Flag



Source: <http://www.praice.sk>

The flag of Prašice consists of three vertical stripes in the village colours: red, white and yellow. It ends with three tips, each in mentioned color.

The seal



Source: <http://www.prasice.sk>

The seal of Prašice is round with the municipality symbol in the middle and „OBEC PRAŠICE“ around it. There is a grape bunch at the top of the middle between two spikes and next to them on the right side is a vomer and on the left side is a share turned upwards.

Source: Malošík, 2012

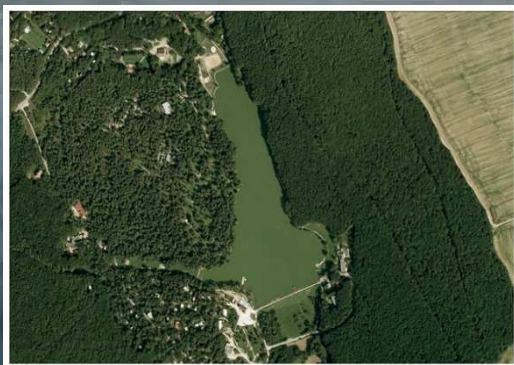
Tourism

The Duchonka dam



Source: www.prasice.sk

Duchonka is situated about 4 kilometers of Prašice urban in 275 metres altitude. Good climatic conditions in Považský Inovec mountains and the whole Duchonka makes this area attractive in summer holiday. There are a lot of facilities of cycling and hiking in neighborhood of Duchonka dam.



Source: Google Earth

Cultural heritage

Hunting castle



Source: Malošík 2011

It was built in 1931 in art nouveau style and it is garnished by quarry stone. The dominant of interior is dancing and music hall with electric organ. At present there is a residence of European institute which offers the possibility of accommodation and eating inside the castle.

Saint Jacob 's church



Source: Malošík, 2011

It was originally in gothic style but between 1758 – 1760 the church was rebuilt to baroque style. The main altar is classical and the main interest of church is unusually bricked chorus. In 1997 was an outdoor altar of st. Cyril and Metod built. It was constructed on the occasion of ordination of Pavol Obid priest.

Chapel of blessed Mary virgin



Source: Malošík, 2011

Its origin is dated around 1820. The interior is dominated by wooden piety from the same year. According to legend the chapel was built by local citizen called Šimon Paluš, which reportedly found a purse of gold ducats in this place. The chapel tended as funeral chapel till the house of mourning was built in 1992.